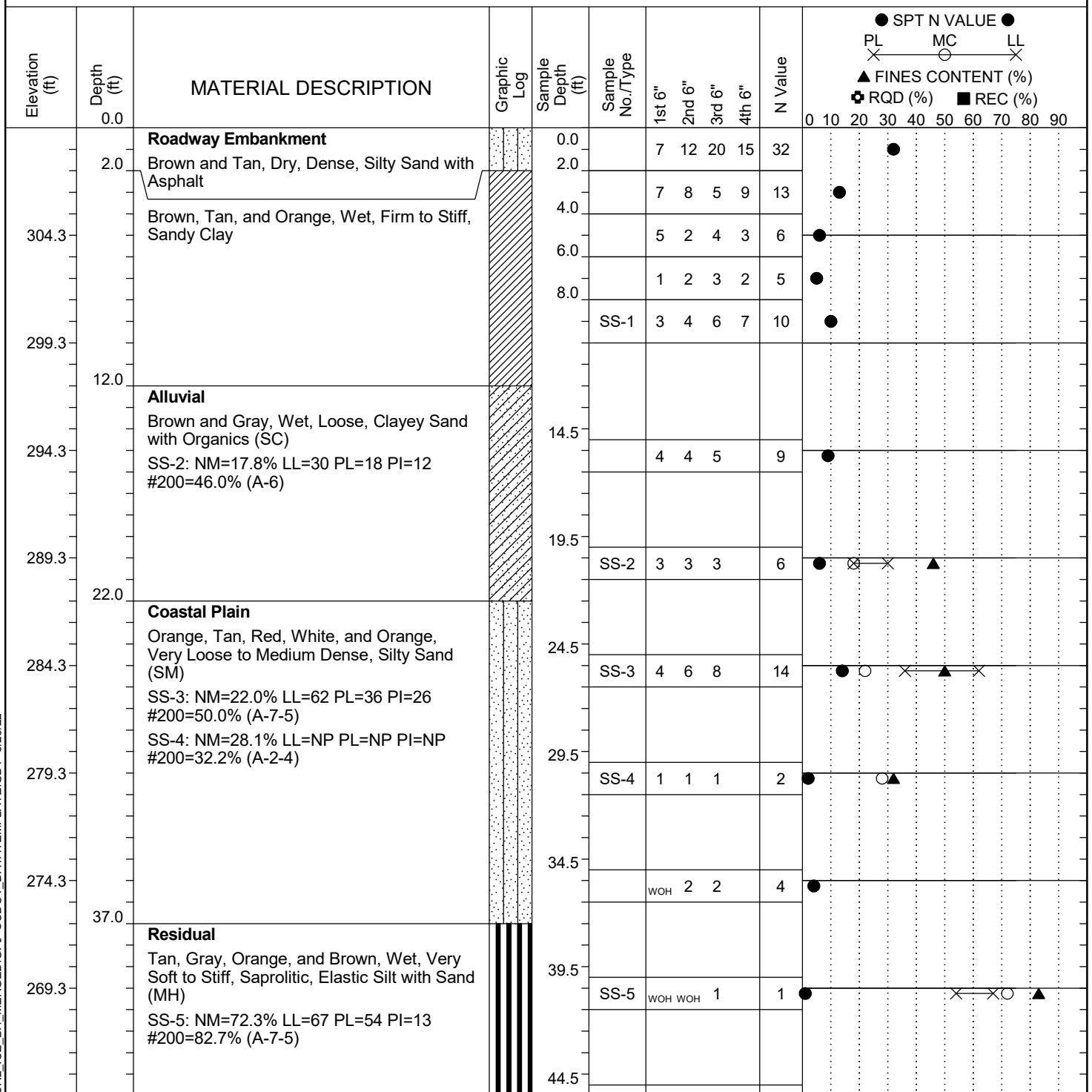


| | | | | | | | | |
|-------------------------------|--|-----------------------------|--|-------------------------|-----------------------|---------------------------|-------------------|--|
| Project ID: P039719 | | | | County: Richland | | Boring No.: G-110 | | |
| Site Description: | | Carolina Crossroads Phase 2 | | | | | Route: Ramp | |
| Eng./Geo.: C. McIlroy | | Boring Location: 396+46 | | | Offset: 28 RT | | Alignment: RAMPF | |
| Elev.: 309.3 ft | | Latitude: 34.03921449 | | Longitude: -81.09577882 | | Date Started: 4/26/2022 | | |
| Total Depth: 69.6 ft | | Soil Depth: 69.6 ft | | Core Depth: N/A ft | | Date Completed: 4/26/2022 | | |
| Bore Hole Diameter (in): 2.25 | | Sampler Configuration | | | Liner Required: Y (N) | | Liner Used: Y (N) | |
| Drill Machine: D-50 #439 | | Drill Method: RW | | Hammer Type: Automatic | | Energy Ratio: 90.8% | | |
| Core Size: N/A | | Driller: R. Cassell | | Groundwater: TOB N/A | | 24HR 23.5 ft | | |



LEGEND

Continued Next Page

SC.DOT 20-81_CCR2_ICE_BH_MERGED.GPJ SCDOT_DATATEMPLATE.GDT 5/23/22

| SAMPLER TYPE | | | DRILLING METHOD | |
|-------------------------|------------------------|--|--------------------------------|------------------|
| SS - Split Spoon | NQ - Rock Core, 1-7/8" | | HSA - Hollow Stem Auger | RW - Rotary Wash |
| UD - Undisturbed Sample | CU - Cuttings | | CFA - Continuous Flight Augers | RC - Rock Core |
| AWG - Rock Core, 1-1/8" | CT - Continuous Tube | | DC - Driving Casing | |